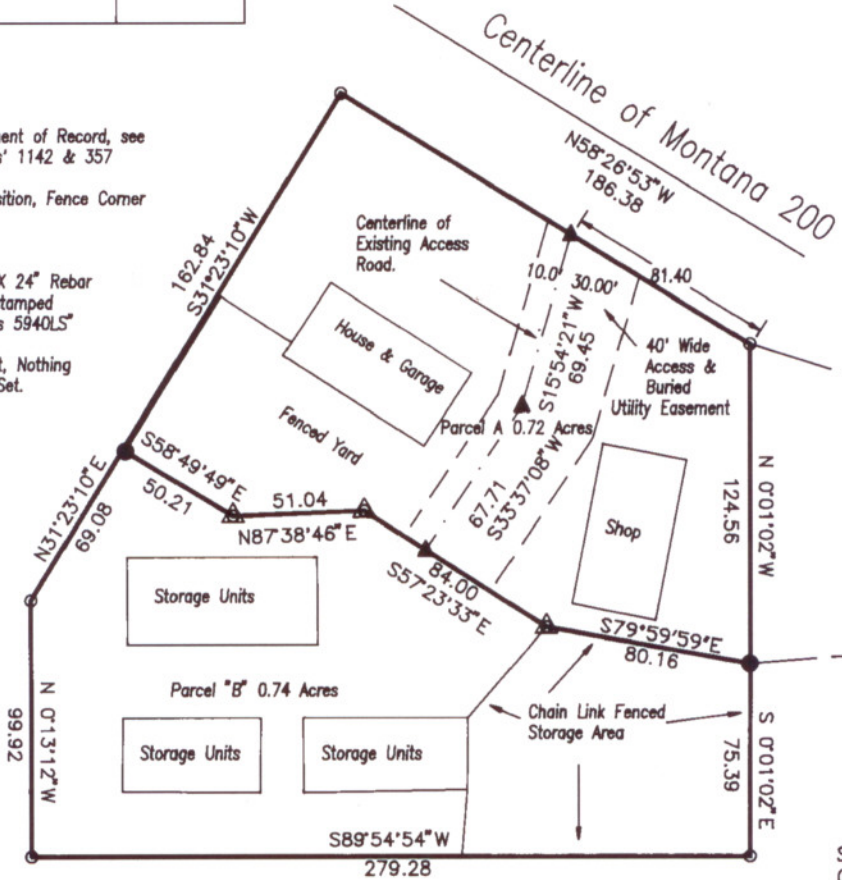




- Fd. Monument of Record, see C.O.S. No.s' 1142 & 357
- △ Corner Position, Fence Corner
- ⊕ As Noted
- Set 5/8" X 24" Rebar with cap stamped "M.Carstens 5940LS"
- ▲ Angle Point, Nothing Found or Set.



A Portion of the SE 1/4 N., R.29 W., P.M.M., Sanders the Southeast Corner of a 1" pipe, on the Southwest Thence, along said edge, 1 Thence, leaving said along shown on C.O.S. No. 1142 S58°49'49" E 50.21'; Thence Thence, S79°59'59" E 80.16 92, Pg. 662; Thence, along Beginning, Containing 0.72 Easement.

Certificate

State of Montana
 County of Sanders
 I Marc J. Carstens, a registered Land Surveyor, certify that the survey shown on the attached plat is true and correct and that such survey is true and correct in all particulars and occupy the premises