

Leutkens Commercial Park

MINOR SUBDIVISION PLAT NO. _____

E² SECTION 15, TOWNSHIP 21 N, RANGE 29 V

P.M.M., SANDERS COUNTY

NEEDS

Montana Department of Health
and Environmental Sciences

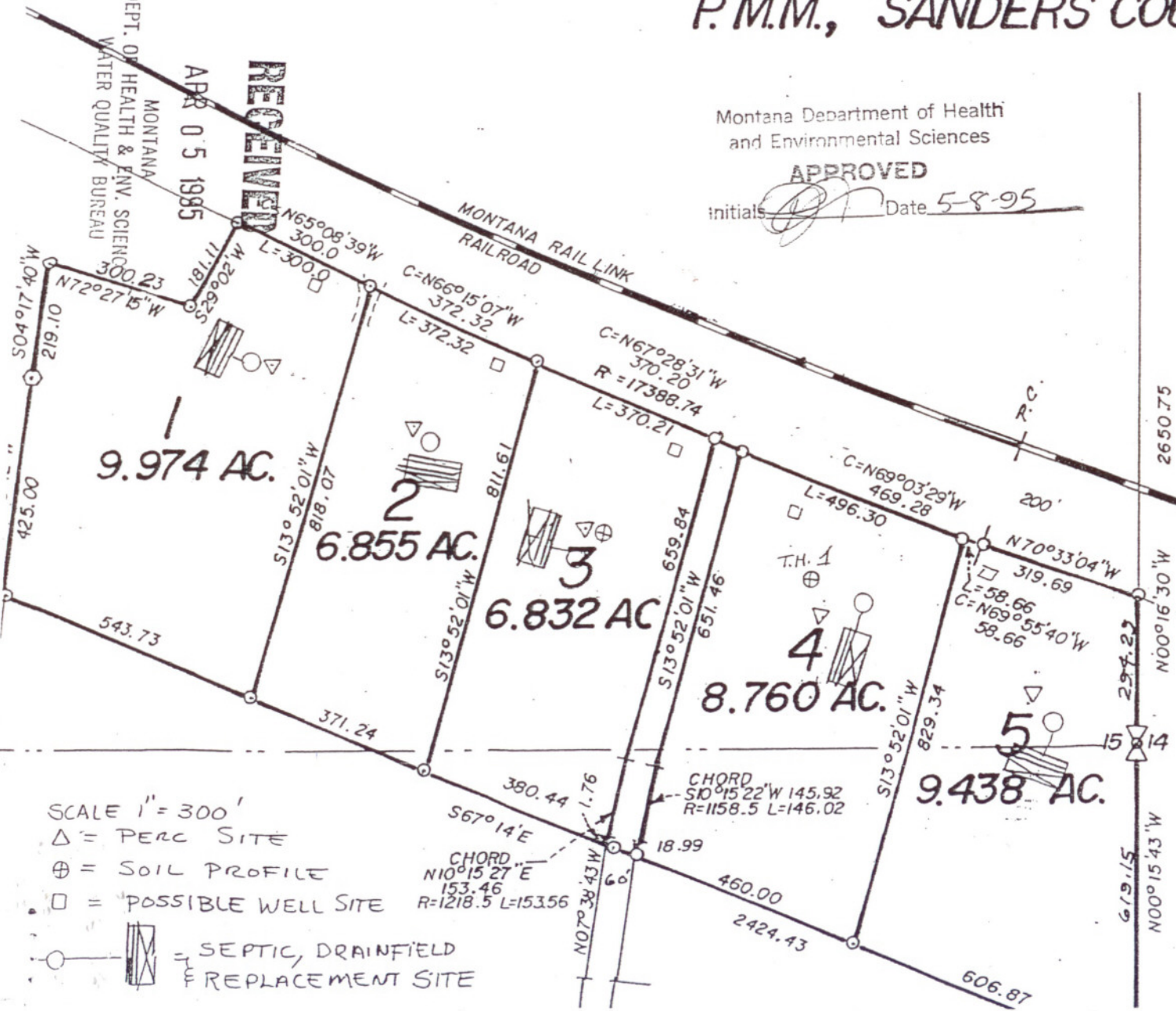
APPROVED

initials *[Signature]* Date 5-8-95

RECEIVED

APR 05 1995

MONTANA
DEPT. OF HEALTH & ENV. SCIENCES
WATER QUALITY BUREAU



TRACT
 A TRAC
 DESCR
 COMME
 619.15'
 N07°38'4
 A CHOR
 TO THE
 SOUTHE
 R/W OI
 N67°28'
 TO THE

TRACT
 A TRAC
 DESCR
 COMME
 619.15'
 N13°52'
 RAILRO
 WITH A
 THENCE
 OF S10°
 AND CL

TRACT
 A PARL
 DESCR
 BEGINN
 294.29'
 N70°22'

- SCALE 1" = 300'
- △ = PERC SITE
- ⊕ = SOIL PROFILE
- = POSSIBLE WELL SITE
- ▭ = SEPTIC, DRAINFIELD REPLACEMENT SITE